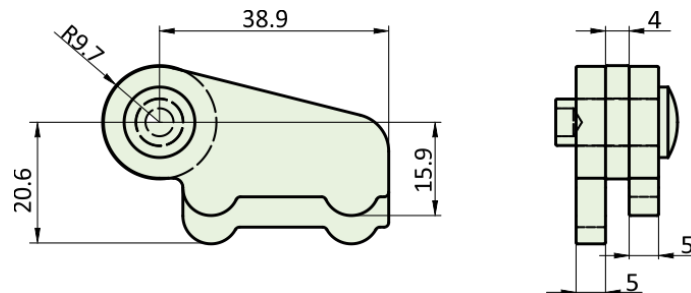


PRODUCT FEATURES & TECHNICAL INFORMATION

- A traditional weld on hinge made from mild steel
- Requires a suitable finish to be applied, *these are normally fixed to the window during preparation stages*
- Hinges are non-handed
- Hinges are supplied as a pair.

S520 Corner Weld on Hinge



S520

Steel Window Fittings/Hinges/S520

Page XX

Dimensions